

Backing Gate



- Hydraulic drive
- Positive drive for forward and reverse movement
- Onboard hydraulic system
- Pressure sensitive - not electrified
- Operated by hand held wireless controller
- Wide selection of sizes
- Yard scraper option



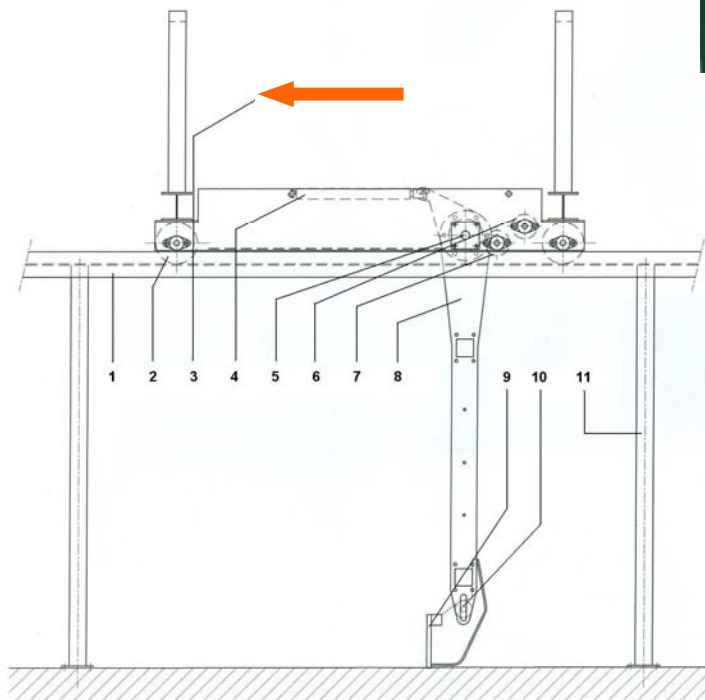
Backing Gate



The hydraulic unit



The hydraulic ram lifts and lowers the backing gate



- 1 Horizontal girder (full length of collecting yard)
- 2 Transport wheel x4
- 3 Moving direction
- 4 Hydraulic cylinder x 2
- 5 Hinge point crowd gate
- 6 Chain wheel transport chain x2
- 7 Guide wheel transport chain
- 8 Backing gate
- 9 Manure scraper (optional)
- 10 Height adjustment manure scraper
- 11 Backing gate construction support

The Fullwood Backing Gate moves along the collecting yard on top of horizontal girders (1).

The main frame covers the width of the collection yard. The hinge pointed crowd gate (8) is suspended from the main frame.

The gate is lifted by two hydraulic cylinders (4).

The main frame moves to the rear of the collection yard and the gate is lowered behind the animals gently nudging them in the direction of the milking parlour.

2 hydraulic cylinders (4) lower and raise the gate pivoting around the hinge point (5).

A hydraulic unit, combined with an electro hydraulic valve, powers the cylinders and the transport shaft

Driving and lifting movements are controlled from the handheld wireless remote control which is also equipped with an emergency stop.

The power cable is suspended from the steel (catenary) cable.